



GMT MONTHLY MEMBERSHIP PROGRESS REPORT

Results as of: 10/31/2017

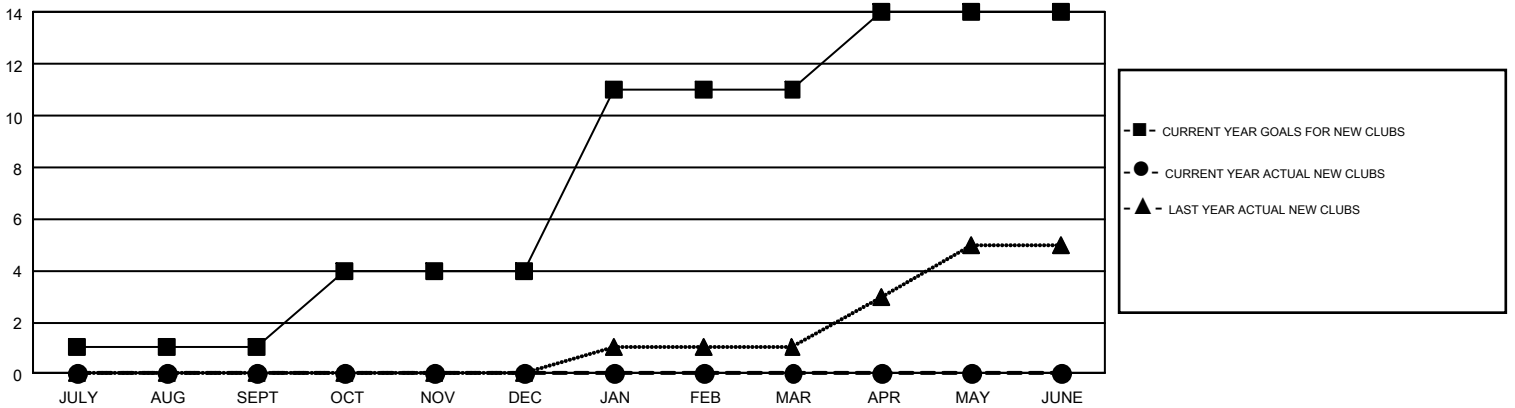
GMT Constitutional Area 2, Group A

GMT: GORDON ZIEGLER

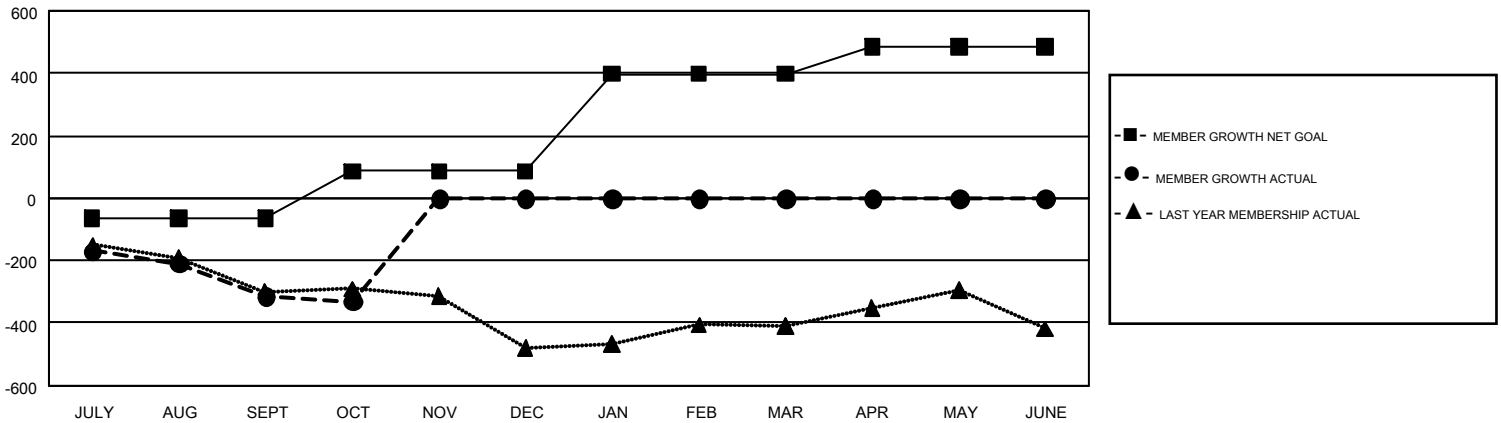
REPORT DOES NOT INCLUDE CLUBS IN UNDISTRICTED AREAS.

Clubs				Members			
RESULTS FOR 2017-2018				RESULTS FOR 2017-2018			
QUARTER	NEW CLUB GOAL	NEW CLUBS	DROPPED CLUBS	QUARTER	MEMBER GROWTH NET GOAL	MEMBER GROWTH ACTUAL	DROPPED MEMBERS ACTUAL (including transfers)
JULY/AUG/SEPT	1	0	5	JULY/AUG/SEPT	-65	306	566
OCT/NOV/DEC	3	0	0	OCT/NOV/DEC	152	200	201
JAN/FEB/MAR	7	0	0	JAN/FEB/MAR	311	0	0
APR/MAY/JUNE	3	0	0	APR/MAY/JUNE	86	0	0

GOALS AND ACTUAL NEW CLUBS CUMULATIVE



GOALS AND ACTUAL MEMBERS CUMULATIVE



DROPPED CLUBS: 5	179 CLUBS OF 697 ADDED 1 OR MORE NEW MEMBERS	GENDER DISTRIBUTION MALE 11,209 (67.90%) FEMALE 5,299 (32.10%)
DROPPED MEMBERS DECEASED 74 CLUB CANCELLED 12 OTHER 681 TOTAL 767	CLICK HERE FOR CUMULATIVE MEMBERSHIP DATA	TOTAL FAMILY UNIT MEMBERS 3,083 FAMILY MEMBERS PAYING HALF DUES 1,570